



Warrington Stakeholder Mapping

February 2011 compiled by the Warrington LINK.
BHA



Introduction and Background.....	3
Key Stakeholders / representative groups.....	4
Warrington Stakeholder Map.....	5
Warrington Stakeholder Map Abbreviations.....	6
Warrington Community Information Directory.....	7
Voluntary and Statutory Groups linked to Health.....	8
Voluntary and Statutory Groups linked to: Children and Young People.....	11
Older persons.....	13
Mental Health.....	14
Sexual Health.....	16
BME Groups.....	17
Gypsies and travellers.....	19
Public/other.....	21
Disease Specific.....	28
Justice.....	29
List of Local Committees/decision making groups that have a LINK rep.....	31
LINK Core Group Who's Who.....	32
Organisations in the Gateway.....	37

Introduction and Background

Profile of Warrington

The PCT follows the same boundaries as Warrington Borough Council. While Warrington is one of the fastest growing and most prosperous districts in the country, there are significant pockets of deprivation located in the town's central wards. The people living in these areas experience problems of high unemployment and poor health. However, Warrington residents as a whole experience far better levels of health and material wealth than many other industrial areas within the North West. The local health profile shows that health in Warrington is improving and the gap is narrowing between the town and England however improvements are still needed. The Health Trusts in Warrington are Warrington Primary Care Trust, North Cheshire Hospital Trust, which is Warrington Hospital and Halton Hospital and 5 Boroughs Partnership Trust, specialist Trust covering Warrington, Halton, St. Helens, Knowsley and Wigan.

Social Care Services within Warrington We have a big role to play not only safeguarding public health, but also in supporting communities to be as healthy as they can be. By working with partners like the local primary care trust we're aiming to support local people to be healthy and happy. Directorates in Social Services include:

- Adapting homes
- Carers
- Children and family care
- Community transport services
- Disabilities
- Fostering, adopting and looked after children
- Health and medical advice
- Mental health
- Parental support Services for older

Key stakeholders / representative groups

Mental Health

Learning Disability

Physical & Sensory disability

Carers

Older People

BME groups

Prisoners

Homeless people

Locality groups (in areas) e.g. housing Assoc, resident groups, parish councils.

Individuals (e.g. forum members)

Long Term conditions- e.g. diabetes, heart condition, cancer, MS neuro. conditions

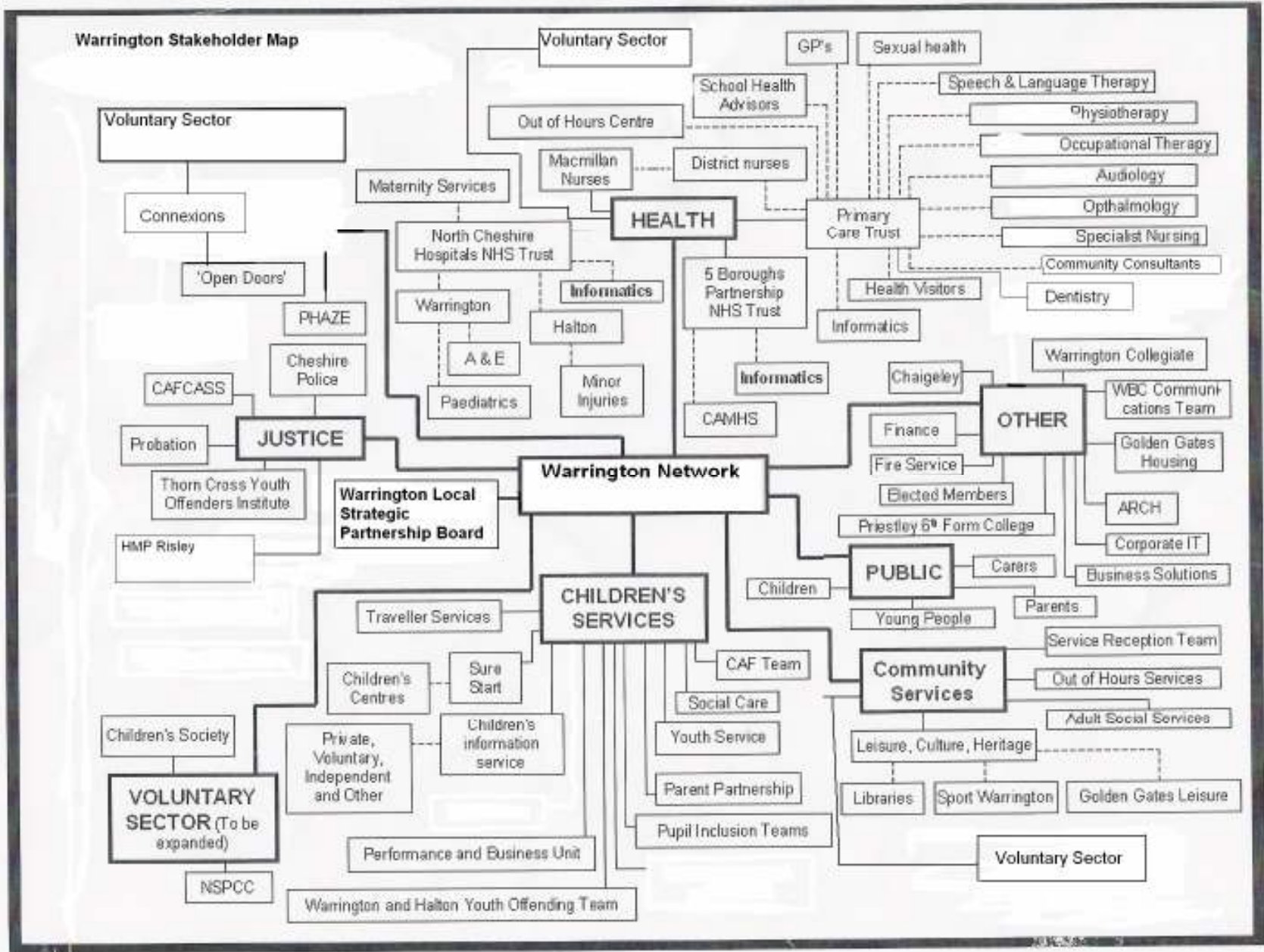
Young people & children

Sexual Health

Refugees & asylum seekers

Migrant workers

Gypsies, travellers



Warrington Stakeholder Map Abbreviation

A&E: Accident and Emergency

CAF Team: Common Assessment Framework Team

CAFCASS: Children and family Advisory Support Service

CAMHS: Child and Adolescent Mental Health Services

G.P's: General Practitioners

NSPCC: National Society for Prevention Cruelty to Children

PHAZE: Drug Action Team

Warrington Community Information Directory (WCID)

The directory is a listing of community and voluntary groups active in Warrington, along with other organisations providing services to the community and individuals. It has been produced through a partnership of Warrington Council for Voluntary Service, Warrington Libraries and Warrington Borough Council's Regeneration Team. The directory is constantly being updated and the latest version can be found at www.warrington.gov.uk/wcid

The WCID Partnership

Warrington Council for Voluntary Service (CVS) – to support and enhance the work of local voluntary groups and organisations

The Gateway
89 Sankey Street
Warrington
WA1 1SR
01925 246880

Warrington Libraries – provides information services to the public through the Central Library, 13 branch libraries around the borough, mobile library visiting outlying areas, elderly people's homes and nursing homes.

Central Library
Museum Street
Warrington
WA1 1JB

Warrington Borough Council Regeneration Team – works with local partners from the community and voluntary sector, statutory bodies and Warrington Borough Council's network of Community Development Officers to support community regeneration and social inclusion projects in the borough

Warrington Borough Council
Regeneration
New Town House
Buttermarket Street
Warrington
WA1 2NH

Voluntary Groups Linked to Health

Organisation Name	Interest	Aims Activities
Warrington MIND	Advice & Counselling	Voluntary mental health group.
Warrington User Group	Advice & Counselling	Drug user's advocacy and advice service.
Westy Christian Fellowship Coffee Bar (Drop in)	Advice & Counselling	To give support to alcoholics, drug addicts and their families. Drop in.
Alzheimers Society, Warrington Registered Support Group	Carers	Support and information for carers of people with this condition; raising public awareness.
Muscular Dystrophy Campaign, Lymm and Warrington Branch	Carers	Fundraising for research into the causes and possible cures and treatment of muscular dystrophy, also equipment.
The Stroke Association Family Support Service	Carers	To provide support and information for the families and carers of people who have had a stroke and for stroke people living alone.
Warrington Stroke Club	Carers	Mutual support and self help group for stroke suffer's and their carers.
Claire House Children's Hospice	Children & Families	Terminal care for children aged 0 to 18 and their families.
Contact a Family North West England	Children & Families	Help families who care for children with a disability or special need, by giving information or advice, running workshops etc
Ethnic Welfare	Children & Families	Help and advise people from minority communities about health and social care, learning etc.
JABS - Justice Awareness and Basic Support	Children & Families	Self help and support group promoting understanding about the issues surrounding immunisation and vaccination of children.
National Eczema Society North West Office	Children & Families	Support and information for people with eczema and their carers.
North Cheshire National Childbirth Trust	Children & Families	Giving information and support to new parents and parents-to-be on all effects of pregnancy, birth and early parenthood.
Orford Park Allotment Association	Children & Families	To assist all members in the pursuit of gardening as a recreation and to promote health, education and community fellowship.
SADS UK	Children & Families	Raise awareness about Sudden Arrhythmia Death Syndrome (SADS) and support people who have suffered bereavement
The Children's Adventure Farm Trust, Millington	Children & Families	Respite breaks for groups of sick, disabled and disadvantaged children.
The PISCES Trust (People in Search of a Cure for Evans Syndrome)	Children & Families	To promote awareness, educate the public and support families dealing with Evans Syndrome.
Warrington ADD/ADHD Support Group	Children & Families	To help to support families and carers of children and young people with ADD/ADHD.
Warrington Aspergers Society - WASPS	Children & Families	Parent group to offer support, information and education for families who have a child with learning difficulties
Warrington Association for Special Children (WASC)	Children & Families	To provide support to children with severe and profound learning difficulties, run holiday play schemes and in term clubs.
Warrington Children's Diabetes Group	Children & Families	Support group for parents of children with diabetes. Have speakers and run various activities for children.
Westy Sure Start	Children & Families	To promote improved health, social and emotional development to families with pre-school children who live in Westy.
5 Boroughs Partnership (NHS Trust)	Health & Welfare	Trust that supports people with mental health problems and learning disabilities.
A.D.S. (Alcohol and Drug Services)	Health & Welfare	Working to prevent and reduce the harm caused by alcohol to individuals, their families and the community.
Alcohol Services CIC	Health & Welfare	Free and confidential counselling service for problem drinkers and their family members. Phone to make appointment.
ARCH Initiatives	Health & Welfare	To provide substance misuse services which support people to take control of their lives, via Advice, Rehabilitation, Counselling etc
Arthritis Research	Health & Welfare	Fundraising for national arthritis research organisation.
Body Positive Cheshire and North Wales	Health & Welfare	Support, information and advice for people living with or affected by HIV / AIDS.
British Cardiac Patients Association (Zipper Club)	Health & Welfare	To support and reassure all people with heart problems. Fundraising for equipment for Warrington General Hospital.
British Red Cross Cheshire Branch, Fire and Emergency Support Service	Health & Welfare	Fire victim support scheme for people who have suffered a domestic fire, flood or other emergency.
Cancer Research UK, Warrington Branch	Health & Welfare	Volunteer fund-raising in Warrington for national charity. Support for research.
Chernobyl Children Lifeline	Health & Welfare	To help children suffering from the after-effects of the Chernobyl disaster by offering one month's respite care in the UK.
Cheshire Asbestos Victims Support Group	Health & Welfare	Free confidential advice, support and help to sufferers and/or their families who suffer from an asbestos related illness.
Culcheth and District Royal British Legion	Health & Welfare	Care and support of ex servicemen and women and their dependants.
Diabetes UK NW Regional Office	Health & Welfare	Charity for people with diabetes. Not a drop-in centre.
Gay Healthy Alliance Project (ghap)	Health & Welfare	Promotes physical, psychological and spiritual health and social well-being of gay, lesbian and bisexual people.
Genito-urinary Medicine Clinic (Special Clinic)	Health & Welfare	Full screening for sexually transmitted diseases. Pre and post test counselling for HIV, annual cytology, treatments.
Macmillan Cancer Relief, North Cheshire	Health & Welfare	To provide cancer care to patients and their families. Fundraising in North Cheshire.

Mid Lancs Ladies Royal British Legion	Health & Welfare	Care and support of ex servicemen and women and their dependants.
Mood Swings Network Warrington	Health & Welfare	Self-help group offering support for sufferers of depressive or bi-polar illness, their carers, family and friends.
National Association for Colitis and Crohns Disease (NACC)	Health & Welfare	Information and support for people with Crohns Disease and Colitis (inflammatory bowel disease- IBD) and their families.
Radio General - Warrington Hospital Radio	Health & Welfare	To relieve sickness and old age among persons of the local community of Warrington by providing a local broadcasting service.
Roy Castle Lung Cancer Support and Information Group	Health & Welfare	To support patients and their families following a diagnosis of lung cancer to address issues such as diet, breathlessness etc
St John Ambulance	Health & Welfare	First aid training. Public duties and care.
St Rocco's Hospice	Health & Welfare	To provide palliative care for patients suffering from life threatening diseases and to provide support to their families.
Stockton Heath Lions International	Health & Welfare	Men and women's group (aged 30+). Welfare and fundraising to support local needy.
The John Holt Cancer Foundation (Warrington)	Health & Welfare	Offer advice and support to anyone who is affected by cancer, helpline, information.
The Matthew Ellis Trust	Health & Welfare	Fundraising to find a cure for Matthew Ellis who suffers from Angelman Syndrome. Fundraising for research into genetic diseases.
The Villages Drug and Alcohol Forum	Health & Welfare	Forum of people concerned with drug and alcohol abuse in the villages of Culcheth, Glazebury, Glazebrook, Hollins Green.
Tuberous Sclerosis Association	Health & Welfare	Fundraising, research, supporting sufferers and promoting awareness.
Warrington Epilepsy Support Group	Health & Welfare	Support, advice and varied social programme for people with epilepsy, their family and friends.
Warrington Ostomy Support Group	Health & Welfare	For people with stomas (colostomy / ileostomy / urostomy) to get together for support and to share views.
Woolston with Martinscroft Royal British Legion	Health & Welfare	Care and support of ex servicemen and women and their dependants.
Adult Mental Health Service, Warrington NHS Trust	Mental Health	Provides a needs led assessment for clients between 16 and 65 years to maximise independence and capabilities.
Breeze in Self Help Group	Mental Health	Self help mutual support group for lonely isolated people, particularly the ex-mentally ill returning to the community.
Footsteps	Mental Health	To provide a point of contact, information and support, in a confidential environment, for anyone worried about drug use in their family
Making Space	Mental Health	Helps support all those affected by the problem of schizophrenia and other forms of serious and enduring mental illness.
SAFE	Mental Health	To provide a safe and secure atmosphere where people with mild to moderate mental health issues can meet.
Warrington Association for Mental Health (MIND)	Mental Health	Promotion of needs of psychiatric patients and ex-patients. Consortium with health service / social services operating support
Warrington Community Care	Mental Health	WCC aims to provide a range of accommodation, care and support for people with mental health support needs
Warrington Day Centre	Mental Health	Providers of informal open access day centres for adults who have experienced any form of mental illness.
Watch and Warrington Plus Patient Advocate Service	Mental Health	Independent advice and information for patients and families concerned about rights, care, etc under the Mental Health Act.
Women's Contact Group	Mental Health	For women who have had or are experiencing mental health problems / depression / anxiety.
Cheshire Alliance of Disabled People (ChAD)	Physical Disabilities	Independent organisation acting for integration and change in disability services, access and activities.
Cheshire Asbestos Victims Support Group	Physical Disabilities	For anyone who has worked with asbestos and suffers breathing or chest problems. Give support and help with claim forms etc
Cheshire Disabilities Federation	Physical Disabilities	Direct payment support service to assist client groups with the payment scheme and advocacy.
Culcheth WRVS Disabled Club	Physical Disabilities	Social and recreational club for the disabled run by WRVS.
Dyspraxia Foundation Cheshire Branch. DISBANDED	Physical Disabilities	Support to sufferers and families. National Helpline number 01829 751517.
Lions Club, Westbrook	Physical Disabilities	Activities include fundraising to support local people, charities and communities.
Multiple Sclerosis Society, Warrington and District Branch	Physical Disabilities	To provide/secure care support needed to enable everyone affected by MS
Myasthenia Gravis Association, Warrington and District Branch	Physical Disabilities	Provides comfort and support to Myasthenics, their families and carers, breaking down isolation, raising awareness.
Myasthenia Gravis Association, Warrington Branch	Physical Disabilities	Provides comfort and support to sufferers, families and carers of muscle weakness disease MG.
Northwest Association of Disabled Motorists	Physical Disabilities	Aims to get more disabled people driving, promotes independence and mobility, provides information on disablement for drivers.
Nugent Care Warrington Friday Club	Physical Disabilities	To provide an opportunity for people with learning disabilities to get together with friends and undertake various activities.
Riding for the Disabled Association, Camsley Grange Group	Physical Disabilities	Provides facilities for disabled adults and children to ride horses.
Shopmobility Warrington	Physical Disabilities	Service provided by Warrington Disability Partnership. Provides mobility for people using Warrington town centre
The Wizard Narrowboat For Disabled People, their families, carers and groups.	Physical Disabilities	Free day trips for groups to include a person with disabilities. Based on the Bridgewater Canal at London Bridge,
Warrington and District Scope	Physical Disabilities	Provide services for individuals with cerebral palsy related disabilities and their carers.
Warrington Community Living	Physical Disabilities	Houses for supported living accommodation.

Warrington Disability Forum	Physical Disabilities	Service provided by Warrington Disability Partnership. Co-ordinating group of statutory and voluntary organisations
Warrington Disability Partnership (WDP)	Physical Disabilities	Wide range of information and advice for disabled people, carers, friends, and professionals.
Warrington Sports and Recreational Club for the disabled	Physical Disabilities	To offer sports and recreational activities to disabled people.
Warrington Wolves Disabled People's Sports Club	Physical Disabilities	Promote archery for the disabled in the community.
Alcoholics Anonymous	Self Help & Mutual Support	To help people recover from alcoholism and stay away from alcohol one day at a time using a 12 step programme.
Communication Support Service	Self Help & Mutual Support	To help people who have lost the ability to speak or understand speech because of a stroke, and to support their families.
Forget-Me-Not Support Group	Self Help & Mutual Support	The group aims to support anyone who has suffered a miscarriage, still birth or Neonatal Death, recently or in the past.
MENCAP Warrington	Self Help & Mutual Support	Provides support and leisure activities for people with a learning disability and their families.
Roy Castle Lung Cancer Foundation Warrington and District Support Group	Self Help & Mutual Support	Fundraising for new research centre for investigation into causes of cancer. Public Health information publicity. Confidential emotional support for people in despair or feeling suicidal.
Samaritans	Self Help & Mutual Support	National Number; 08457 90 90 980
Speakability Warrington	Self Help & Mutual Support	Self-help and support for aphasia sufferers including stroke patients and people with brain injuries caused by accidents or illness.
Survivors of Bereavement by Suicide (SOBS)	Self Help & Mutual Support	Self help group for families and friends. Telephone helpline for people who have lost someone to Suicide. 0870 241 3337.
Warrington Diabetes UK Voluntary Group	Self Help & Mutual Support	Offers help and support to sufferers, families and carers.
Warrington Heart Support Group	Self Help & Mutual Support	Help and support to people with heart problems and their families. Raising funds to provide equipment the local Rehab programme.
Williams Syndrome Foundation	Self Help & Mutual Support	Give information and support to parents, families, relatives, GPs, social workers etc, of people affected by Williams Syndrome.
Association of Blind and Partially Sighted Teachers and Students (ABAPSTAS)	Sensory Disabilities	ABAPSTAS is the only national organisation of visually impaired people which focuses on education and employment issues.
DeafPLUS	Sensory Disabilities	Deaf and hearing integration. Provide deaf and hearing people with the means to achieve their potential
Guide Dogs for the Blind Association, Warrington and District Fundraising Branch.	Sensory Disabilities	Fundraising for national society. Aim to enable an independent life with the help of a dog at no cost to the blind person.
North West Deaf Association (British Deaf Organisation)	Sensory Disabilities	Promote and develop British Sign Language and promote and develop BDA Community Interpreting in the North West.
RNIB Transcription Centre Northwest	Sensory Disabilities	Transcription of printed material into an accessible medium for visually impaired clients.
The Warrington Talking Newspaper.	Sensory Disabilities	The provision of news on tape for the blind and partially sighted.
Warrington & District Society for Deaf People, Deafness Support Network	Sensory Disabilities	Information, help and advice for people with all levels of hearing loss.
Warrington and District Society for Deaf People	Sensory Disabilities	Provides social and recreational facilities for deaf people. Acts as agent of Social Services providing welfare services.
Warrington Disability Information Services (WDIS)	Sensory Disabilities	Wide range of information and advice for disabled people, carers, friends and professionals.
Warrington Widnes and District Society for the Blind	Sensory Disabilities	Provide on going support and advice for visually impaired people and their carers.
Breast Cancer Care	Women	UK's provider of information, practical assistance and emotional support for anyone affected by breast cancer.
Warrington Breast Care Support Group	Women	Self help and mutual support group for women who have had or are about to have a mastectomy or suffer from breast cancer.

Children and Young People

Connexions

Career guidance, training and support to 13-19 year olds.

Contact:

The Gateway
89 Sankey Street
Warrington
WA1 1SR

Children and Young People's Strategic Partnership

Multi agency group leading to the development of the Children's Trust.

GLYSS (Gay and lesbian youth support services)

Contact: Jane Garside

Address: East Annexe Town Hall, Sankey Street, Warrington,
WA1 1UF

Phone: 01925 633053

E-mail: jgarside@warrington.gov.uk

Prince's Trust

Contact: Angela Murray

Address: Warrington Fire Station, Winwick Road, Warrington,
WA2 8HH

E-mail: amurray@cheshirefire.co.uk

Children and Young People's Sector Forum

Voluntary Sector representation elected from this group to represent the voluntary and community sector at strategic level.

Contact: Gwen Lightfoot

Warrington CVS
The Gateway
89 Sankey Street
Warrington
WA1 1SR

Tel: 01925 246880

E-mail: gwenl@thegateway.org.uk

Fit Kidz

Contact : Paul Flannery

Address : Whitecross Community Centre, Lexden Street,
Warrington, WA5 1PT

Phone : 07740075798

Email : pflannery@warrington.gov.uk

Website : www.fitkidzwarrington.btik.com

NSPCC

Contact: Yvonne Jama

Address: Tim Parry Jonathan Ball Young Peoples Centre, Peace
Drive, Great Sankey, Warrington, WA5 1HQ

Phone: 01925 581200

E-mail: yjama@NSPCC.org.uk

Safeguarding Board

Multi Agency group looking at all aspects of aspects of child protection.

The Children's Society

Contact:

Address: 4 Catterall Avenue, Orford, Warrington, WA2 0JA

Phone: 01925 852905

Fax no: 01925 815551

Warrington Children's Information Service

Contact: Sandra Jones

Address: Education Department 3rd Floor, New Town House,
Buttermarket Street, Warrington, WA1 2NJ

Phone: 01925 443131

Fax: 01925 443153

E-mail: cis@warrington.gov.uk

Website: www.warrington.gov.uk/childcare

Young Enterprise

Contact: Anthony Brown

Address: G7 Warrington Business Park, Long Lane, Warrington,
WA2 8TX

Phone: 01925 412955

E-mail: anthony.brown@cheshireye.org.uk

Youth Matter!

Youth Matter offers a range of support for voluntary youth group organisations covering operational queries, funding and above all aiding organisations to reach Youth Matter! validation.

Contact: Gwen Lightfoot

89 Sankey Street

Warrington

WA1 1SR

01925 246887

Tim Parry Jonathan Ball Foundation For Peace

Contact: Lyn Hitchen

Address: Tim Parry Jonathan Ball Young Peoples Centre, Peace
Drive, Warrington, WA5 1HQ

Phone: 01925 581237

Website: www.foundation4peace.org

Warrington Youth Parliament

Contact: Adam Jackson/Tracey Lowe

Address: East Annexe, Town Hall, Sankey Street, Warrington,
WA1 1UF

Phone: 01925 443882

E-mail: ykypwarrington@hotmail.com

Youth Federation

Supports the capacity of the voluntary sector

Contact: Peter Wilson

17 Castle Street

Chester

CH1 2DS

Warrington Youth Service

Provide statutory youth provision e.g. Youth Workers

Contact: Warrington Borough Council

Town Hall

Sankey Street

Warrington

Older Persons

Warrington Older People's Partnership Board

50% equal membership from OPEG and 50% from main statutory partners including the council, local NHS trusts, the police, and voluntary sector and faith communities.

Older Persons Engagement Group (OPEG) is a formally constituted robust independent organisation which brings together older people from across the town to ensure that their voices are heard by those who make decisions affecting the lives of older people in Warrington.

Contact: Eileen Fitzgerald, the Gateway, 89 Sankey Street, Warrington, WA1 1SR

Older People's Forum to improve the lives of people over 50 years old. Meeting First working Monday in the month.

Contact: Mr Alf Clemo, Warrington Baptist Church, 107 Sankey Street, Warrington.

Tel: 01925 820602.

Mental Health

Mental Health

National Service Framework

Adult – CAHMS – Older People – Meets 3 Monthly.

Warrington Mental Health Partnership Board

Sub groups

Service Delivery and Commissioning Health Promotion and Prevention Social Inclusion Primary Care – Clinical Issues



Equality and Diversity

Groups

Warrington Day Centre Creative Support – Men’s group, women’s group, young persons group. Informal open access day centres for adults who have experienced any form of mental illness.

44 Allen St , Warrington, WA2 7JB

Tel: 01925 652204

Warrington Community Care – aim to provide a range of accommodation, care and support for people with mental health support needs.i.e Nursing home, 2 Residential, 5 flats, housing schemes. Park house Day Centre and 3 shared house accommodation.

Contact Mr D Mathews

89-91Bewsey St, Warrington. WA2 7JQ

Tel: 01925 635012

Warrington Mental Health forum –Meets monthly first Wed in the month

Contact: Mental Health Service User Development Worker Sarah Brittlebank.

Tel: 01925 638836.

E-mail: sbrittlebank@warrington.gov.uk

Office: Whitecross Community Centre.

Warrington Mood Swings – Network. Meet 2nd & 4th Thursday in the month self help group for people with any mental health issue. Contact: Mental Health Service User Development Worker Sarah Brittlebank.

Tel: 01925 638836.

E-mail: sbrittlebank@warrington.gov.uk

Warrington Carers Mental Health sub group run by social services (Sue Bold) links with carers centre meets monthly. E-mail: sbold@warrington.gov.uk

Women's contact group- Wycliffe Church every Wed self help ladies group.

Warrington SAFE group meet fortnightly in The Gateway, people with mild / moderate depression.

Sexual Health

Rape & Sexual abuse support centre. Counselling and support, information and group work for people over 10 who have experienced rape and / or sexual abuse.

Contact: Confidential town centre premises.

Tel: 01925 245445

The Relationship Centre

Address: The GATEWAY, 89 Sankey Street, Warrington

Phone: 01925 246910

E-mail: info@healthyrelationships.org.uk

Website: www.healthyrelationships.org.uk

Aims and Activities: Promoting healthy relationships. Educating young people in building positive, violence-free futures.

Talk don't walk (self help support group) Relationship Centre.

Address: The GATEWAY, 89 Sankey Street, Warrington

Phone: 01925 246910

E-mail: info@healthyrelationships.org.uk

Website: www.healthyrelationships.org.uk

BME Groups

Cheshire Halton & Warrington Racial Equality Council Works towards the elimination of racial discrimination and promotes equal opportunities. Holds local appointments in the Gateway, Warrington.
Contact Mrs Shantelle Janes, Director. 2 Hunters Walk, Canal St, Chester CH1 4EB. Tel: 01244 400730

Warrington Islamic Association To foster, support and protect the welfare of the Islamic faith and their families.
Contact:

Warrington Hindu Cultural Association Integration of ethnic minorities into main stream activities.
Contact; Divyesh Trivedi 0785 4388859

Multi Cultural Forum - Promotion of the multicultural composition of Warrington.
Contact Sue Blyth YMCA 3 Winmarleigh St, Warrington. WA1 1NB. Tel: 01925 632771

Over 60's BME Group –
Contact Cllr Roy Smith (treasurer) The Gateway, Warrington.

Somali Community – Alin Dirir

Chinese Groups – Gateway multi cultural room (translation work)

Hindu Youth Group Warrington

Contact: Raj Mistry

E-mail: rk.mistry@ntlworld.com

Venue address: Fallowfield Grove, Longbarn, Warrington

Aim + Activities: to promote basic values of Hindu way of life.

For more information on BME groups, please contact Noshella Rashid at nrashid@warrington.gov.uk or telephone at 01925 638836.

Refugees and Asylum Seekers, Migrant workers

Immigration and advisory service Providing community legal advice and representation for immigrants and asylum seekers.

Advice sessions in the Gateway by appointment.

Contact: immigration Advisor, Beetham House , 59-61 Tithebarn St , Liverpool. L2 2SB. Tel; 0151 242 0920.

Amnesty International Promoting human rights and working to secure fair trials

Contact Local Secretary. - Evelyn Kinsella 39 Beechways, Appleton. Warrington WA4 5ER. Tel; 01925 268871.

Gypsies and Travellers

National Gypsy Council – Supports and works in rights of the Gypsy people, e.g. education, culture, welfare and civil rights.

Greenacres Caravan Park
Hapsford
Helbsy
Warrington
WA6 OJS

The Cheshire Chief Executive Advisory Group on Gypsies and Travellers – the group was constituted in an effort to ensure a fair and consistent approach to Gypsy and Traveller issues across the area.

Cheshire, Halton and Warrington Gypsy/ Traveller Coordinator

Runcorn Town Hall
Heath Road
Runcorn
Cheshire
WA7 5TD
0151 424 2061 EXT.4612

Police Gypsy/ Traveller Liaison Officers

West area of Cheshire 01244 614299
East area of Cheshire 01244 615372

Cheshire, Halton and Warrington Racial Equality Council

92 Watergate Street
Chester
CH1 2LF
01244 400730
chawrec@btconnect.com
www.chawrec.org.uk

Cheshire Gypsy and Travellers Voice – Gypsy and Traveller led group that has been set up to give Gypsies and Travellers in Cheshire a voice
92 Watergate Street
Chester
CH1 2LF
01244 400730
Helpline 07886459870
info@travellersvoice.org

For more information on Gypsy and Travellers Groups, please contact Sarah Preston on: spreston@warrington.gov.uk or tel: 01925 638836.

Public/ Other

Elected Members – Parish and Town Councils

Name of Parish and Parish Clerk	Chairman of Council	Date and Place of Meetings(evenings meetings)
APPLETON		
Cllr B Axcell 24 Kingsley Drive Appleton Warrington WA4 5AF Tel: 01925 267540	Mr P Briggs Appleton Parish Hall Dudlow Green Road Appleton Warrington WA4 5EQ Tel/Fax: 01925 268153 clerk@appletonpc.org.uk	3rd Tuesday of each month (except August) Appleton Parish Hall Dudlow Green Road Appleton Warrington WA4 5EQ

BIRCHWOOD

Cllr Mike Evans 40 Whinchat Drive Oakwood Birchwood Warrington WA3 6PB Tel: 01925 481319	Mrs F McDonald Parkers Farm Community Centre Delenty Drive Birchwood Warrington WA3 6AN Tel: 01925 819440 (office) clerk@birchwoodtowncouncil.org.uk	4th Tuesday of each month (except August & December) Parkers Farm Community Centre Delenty Drive Birchwood WA3 6AN
--	---	--

BURTONWOOD AND WESTBROOK

Cllr Kevin Burgess 13 Weymouth Road Burtonwood Warrington WA5 4HN Tel: 01925 226884	Miss J A Pickles Burtonwood & Westbrook Parish Council FREEPOST, NWW 1487A Warrington WA4 2RJ Tel/Fax: 01925 231280 clerkburtonwoodpc@btinternet.com	3rd Wednesday of each month (except August & December) Parish Hall Westbrook
---	---	--

CROFT

Cllr M Cummerson 7 Heath Lane Croft Warrington WA3 7DH Tel: 01925 764127	Mr G McCann Unit K1 Taylor Business Park Warrington Road Risley Warrington WA3 6BH Tel: 01925 733766 pc@croftvillagecheshire.co.uk	3rd Tuesday of each month (except August) Parkers Farm Community Centre Delenty Drive Birchwood & Village Memorial Hall, Croft Croft
--	---	---

CUERDLEY

Cllr D Swift 10 Cuerdley Green Cuerdley Warrington WA5 2XG Tel: 0151 495 1729	Mr J Convey 9 Cuerdley Green Cuerdley Warrington WA5 2XG Tel: 0151 420 5991 clerk@jolaine.net	Approximately every two months as arranged. Cuerdley Cross Inn Cuerdley Warrington
---	---	---

CULCHETH AND GLAZEYBURY

Cllr H Campbell 10 Bollin Close Culcheth Warrington WA3 5DU Tel: 01925 766658 Email: Helena_999@hotmail.co.uk	Mr M Durrington 2 Hebden Avenue Culcheth Warrington WA3 5JL Tel: 01925 733619 culcheth.clerk@btinternet.com	3rd Tuesday of each month (except August) Age Concern Centre Jackson Avenue Culcheth or Glazebury Methodist Church Warrington Road Glazebury
--	---	--

GRAPPENHALL AND THELWALL

Cllr M J Biggin 46 Georges Crescent Grappenhall Warrington WA4 2PP Tel: 01925 262831	Janet A Richards Council Office, Bellhouse Farm Bellhouse Lane Grappenhall Warrington WA4 2SD Tel/Fax: 01925 264918 (office) Tel/Fax: 01925 269916 (home) info@grappenhallandthelwallpc.org.uk	Penultimate Thursday of each month (except August) Council Office Bellhouse Lane Grappenhall
--	---	---

GREAT SANKEY

Cllr J Regan 4 Grosvenor Close Great Sankey Warrington WA5 1XG Tel: 01925 650057	Mrs C Wakefield Great Sankey Parish Council Whittle Hall Community Centre Lonsdale Close Whittle Hall Warrington WA5 3UA Tel: 01925 712279	2nd Wednesday of each month (except August) Tim Parry Community Centre Cromdale Way Great Sankey
---	--	---

HATTON

Cllr E Nicholls Hatton Cottage Warrington Road Hatton Warrington Tel: 01925 261621	Mr D A Charles 19 Goose Lane Hatton Warrington WA4 5PA Tel: 01925 730958 mafuta@zuluwarwick.demon.co.uk	Bimonthly No fixed venue
---	--	-----------------------------

LYMM

Cllr Pam Hunter 19 Sandy Lane Lymm Cheshire WA13 9HU Tel: 01925 754480	Mrs Y P Cook 7 West Hyde Lymm WA13 0HA Tel: 01925 753746 ypcook@aol.com	2nd Tuesday of each month (except August) The Village Hall Pepper Street Lymm
--	---	--

PENKETH

Cllr G Warburton 10 Avon Avenue Penketh Warrington WA5 2EX Tel: 01925 726830	Mrs Gill Humphreys 2 Tensing Close Great Sankey Warrington WA5 8FN Tel: 01925 712839 (9am – 3pm only) Mobile: 07758 802218 penkethparish@yahoo.co.uk	2nd Monday of each month (except August) Community Hall Honiton Way Penketh
--	--	--

POULTON-WITH-FEARNHEAD

Cllr C Oliver 50 Canada Close Fearnhead Warrington WA2 0DG Tel: 01925 840793 Mobile: 07919 558562	Mr A K O'Hanlon Fearnhead Cross Centre Padgate Tel: 01925 828233 or 35 Barnfield Road Woolston Warrington WA1 4NS Tel: 01925 821145 (home) pwfpc@yahoo.co.uk	3rd Monday of each month (except August) Insall Road Fearnhead Cross Centre Padgate Warrington
--	--	--

RIXTON-WITH-GLAZE BROOK

Cllr M Banner 13 Margaret Avenue Woolston Warrington WA1 3UN Tel: 01925 815707	Mrs I M Lowe 'Davlyn' 5 Hartley Close Lymm WA13 0JJ Tel: 01925 754770 Mlowe8@sky.com	3rd Thursday of each month Community Hall Hollins Green Rixton
--	---	---

STOCKTON HEATH

Cllr Graham Roughsedge 5 Millhouse Avenue Stockton Heath Warrington WA4 2XF Tel: 01925 266211	Mr P Briggs Appleton Parish Hall Dudlow Green Road Appleton Warrington WA4 5EQ Tel/Fax: 01925 210558 clerk@stocktonheathpc.org.uk	2nd Tuesday of each month (except August) Sandy Lane Centre Sandy Lane Stockton Heath
---	---	--

STRETTON

Cllr L Jones 6 Stretton Hall Mews Hall Lane Lower Stretton WA4 4NY Tel: 01925 730233	Ms L Crewe 20 Algernon Street Stockton Heath Warrington WA4 6EA Tel: 01925 450759 strettonparishcouncil@hotmail.co.uk	1st Monday of each month (except August & January) The Church Hall Stretton Road Stretton
--	---	--

WALTON

Councillor Y R Shaikh 45 West Avenue Stockton Heath Warrington WA4 6HU Tel: 01925 604276	Mr Ray Hallam 31 Farnham Close Appleton Warrington WA4 3BG Tel: 01925 264201 Mob: 07801 472083 Waltonpcclerk@yahoo.co.uk	1st Thursday of each month (except August) Parish Room Old Chester Road Higher Walton
--	---	--

WINWICK

Cllr Alan Smith Cop Holt Farm Newton Road Warrington WA2 8SH Tel: 01925 225939	Mr L Higgins PO Box 348 Wigan WN3 6WA Tel: 01942 213104 Leslie.higgins2@btinternet.com	4th Tuesday of each month (except August & December) Winwick Parish Leisure Centre Myddleton Lane Winwick
--	--	---

WOOLSTON

Cllr M Banner 13 Margaret Avenue Woolston Warrington WA1 3UN Tel: 01925 815707	Mr D Pendleton Woolston Parish Council PO Box 921 Milner Street Warrington WA5 1WA Tel: 01925 496711 woolston.pc@ntlworld.com	6 week cycle on Wednesdays (except August) Woolston Community High School Holes Lane Woolston
--	---	---

Health and Wellbeing Overview and Scrutiny Committee Members

All Health OSC information and invites can be forwarded to **Democratic Services, West Annex, Town Hall**

Councillors

David Earl
Colin Froggatt
Tony Higgins
Leslie Hoyle JP
Wendy Johnson
Celia Jordan MBE
Hans Mundry
Steve Roberts
Judith Walker
Judith Wheeler
Steve Wright

Officer

Julia Sykes

Democratic & Member Services
Warrington Borough Council
Town Hall
West Annexe
Warrington
WA1 1UH
Tel: 01925 442113
Fax: 01925 442014
e-mail: jsykes@warrington.gov.uk

Carers Centre

Warrington Carers Centre
Garven Place
Sankey St
WA11GP
Tel: 01925 644212

Role

- Research, development and consultation
- Influence on national, regional and local policy
- Partnerships with other national organisations
- Information through our interactive websites, providing advice and access to support groups

Fire Services

The RESPECT (Reducing Exclusion Starting Positive Engagement with Children Together) is based on Cheshire Fire and Rescue Service's experience of working with young people during the past decade. The partnership involves Youth and Education Services from Cheshire, Halton and Warrington, Connexions and the Youth Federation.

Warrington Collegiate

Contact Warrington Collegiate, Winwick Rd, Warrington, Cheshire WA2 8QA.
Tel: 01925 494494.

Residents & Tenants Groups

Warrington Housing Association, the Gateway.
Tel: 01925 246810.

For more information regarding Residents Groups please contact Warrington CVS on 01925 246880

Warrington Disability Partnership Forum supports people in volunteering, provides computer training other courses, advice for people with physical/ mental health problems.

Contact: Jayne Horton

Centre for Independent Living, Beaufort Street, Warrington, WA5 1BA, 01925 240064

Phase Project

Address: Connexions Warrington and Cheshire, the GATEWAY, 101 Sankey Street, Warrington, WA1 1SR

Phone: 01925 424925

User & Carer Forum supported by WPCT meets regularly at WPCT boardroom.
Contact Jan Holding Warrington NHS Warrington 01925 843600

MATCH multi agency town centre homelessness. Meets every 2 months at Holy Trinity – Sue Blyth – secretary based YMCA.

Bold St Open Door Homeless Peoples Group drop in for the homeless and lonely isolated people.
Contact Ms Wendy Luker, Warrington Methodist Mission, Palmyra Sq, Warrington WA1 Tel: 01925 635594

Warrington CAB free confidential advice on any subject especially welfare rights
Contact the Gateway, Warrington Tel: 01925 246994

Warrington Neighbourhood Boards – Neighbourhood involvement is about working together to bring out the best in our communities and to get the most out of our services.

West Area Co-ordinator: Grahame Harwood 01925 442366.

Central Area Co-ordinator: Chris Skinkis 01925 442329

East Area Co-ordinator: Diane White 01925 442367.

South Area Co-ordinator: Ruth Whitworth 01925 442365

Town Centre 01925 443920

Stronger Together in Warrington Neighbourhood Manager: Jane Critchley 01925 815468.

Disease Specific

Long Term Conditions- Expert Patient Programme facilitated through PALS Officer Val Harper 01925 843600

Diabetes UK (Warrington Branch) Charity to support diabetes.

Contact. Mrs Helen Pattie Regional manager 1st Floor, The Boultings , Winwick St, Warrington. WA2 7TT

Warrington Epilepsy Support Group Support, advice and varied social programme for people with epilepsy and their friends.

Contact Mr Frank Towers, 24 Vauxhall Cl , Penketh, Warrington. WA5 2JX. Tel: 01925 725779.

Macmillan Cancer relief to provide cancer care to patients and their family

Contact Ms Janet HayHurst , fund raiser coordinator North Lodge, Warrington Hospital. Tel:01925 662792

Multiple Sclerosis Society Warrington Branch support for MS sufferers and their families.

Contact Mrs Elaine Maghill, secretary8 Walpole Grove, Orford, Warrington, WA2 9PE Tel: 01925 637120

Arthritis care contact Mrs Ruth Briggs, 16 Walton Rd, Culcheth, Warrington. WA3 5DW

The Stroke Association family support service to provide support and information for the families and carers of stroke victims and for stroke people living alone.

Contact Ms J Berry, family support organiser Ward B12 Warrington Hospital Tel: 01925 662053

Alzheimer's Society Warrington support group support for carers, raising public awareness.

Alzheimer's Society
The Lodge Tannery Court
Tanners Lane
Warrington
Cheshire
WA2 7NA

Tel: 01925 572239.

Justice

Town Centre Partnership – meets monthly The Gateway consists of WB Transport , police, Local Businesses, town centre shop managers, portfolio holders etc.

From this partnership is a steering group – meets monthly.

MATCH multi agency town centre homelessness. Meets every 2 months at Holy Trinity – Sue Blyth – secretary based YMCA.

The Revolving Doors Service - If someone agrees to be helped, the police refer them to the Revolving Doors Service, which is part of mental health services. All the person's needs are then assessed, not just their mental health, and they are helped directly or supported to access help from other agencies. Further solutions are discussed at multi-agency meetings as required.

Tel: 07920 287 944

Thorn Cross Youth Offenders Institute

Thorn Cross
Arley Road
Appleton Thorn
Warrington
WA4 4RL

IMPACT - Innovation Means Prisons And Communities Together

a research project in the North West of England, which focuses on methods of working with offenders in custody, and through the prison gate, to achieve effective resettlement. The project funds 4 Family Link Workers in Thorn Cross Young Offenders Institute.

HMP Risley

HMP Risley Visitors' Centre
HMP Risley
Visitors' Centre
617 Warrington Road
Risley, Warrington

POPS

POPS Partners of Prisoners and Families Support Group
Valentine House 1079 Liverpool

Warrington Community Action Team

Contact: Mike O'Carroll
Address: Stockton Heath Police Station, London Road, Stockton Heath, WA4 2AF
Phone: 01244612635
Email: michael.ocarroll@cheshire.pnn.police.uk

Youth Offenders Team

Contact: Fiona Jones
Address: Warrington Police Station, Arpley Street, Warrington, WA1 1LQ
Phone: 01925 445006
E-mail: fiona.jones@halton-borough.gov.uk

SOVA IMPACT

SOVA provides a range of innovative services within many communities, with the majority of its work remaining in the Criminal Justice sector

IMPACT Project, Room 203
Cinnamon House
Cinnamon Park
Crab Lane
Warrington WA2 0XP

Action for Prisoners Families Contact Cheshire Support Group - Contact's aim is to relieve suffering, protect the mental health of husbands, wives, partners, families and children of persons who have suffered a legal restriction of their liberty

Ascot Court (J26/27)
71-73 Middlewich Road
Northwich
Cheshire

Below you will find a list of local committees / decision making groups/ organisations that LINK members here in Warrington are either co-opted onto or have an interest as a volunteer champion for Patient and Public Involvement. LINK members co-opted with Terms of Reference onto decision making groups has been through the LINKs host organisation.

Dementia Steering Group
Violent Patient Scheme
Learning Difficulties Forum at WHHFT – Warrington Disability Partnership
Warrington Dental Commissioning Board
Mental Health Wellbeing Preventions and Planning Group
5BPS Joint Service Users and Carers Group
WBC/ NHS Warrington Health and Social Care Board
WBC / NHS Warrington Integrated Care Board
Operational Pharmacy Group
Stage 1 of the Intermediate Care work at NHS Warrington and is now involved in Stage 2
Blood Transfusion Group WHHFT
Patient Experience Group WHHFT
Finance and Commissioning Board NHS Warrington
NHS Warrington Board
5BPS Board
Electronic Prescriptions Committee NHS Warrington
Resource Utilisation Programme NHS Warrington
Transforming Community Service Redesign Focus Group
EPIT – Equality and Diversity in Commissioning
NHS Warrington Stroke Steering group
Transforming Adult Social Care Services, Service User and Carer Group
Transforming Adult Social Care Services, Service User and Carer Group Sub Groups
Mental Health Evaluation Project
QIPP – Medicines Management
Attended TASC LINKs group
Dignity in Care Workshop

LINK's Who's Who

The Warrington LINK core group will act as a body that supports the development of the LINK. It will help to determine how it will discharge its statutory duties and responsibilities and how its activities will be carried out. The main roles will be to ensure key local stakeholders are represented and their views considered, ensure the wider LINK are actively engaged with, ensure the LINK carry out a broad range of activities, get results, and balance individual and organisational views. The group will need to think strategically. This group will also be responsible for 'signing off' the annual reports, other reports and recommendations and referrals to the Overview and Scrutiny Committees.

The sub groups and tasks groups will be where the key work of the LINK takes place, gaining the views of the public and hearing their experiences. These groups will be made up of interested individuals and representatives from interested groups and organisations from the wider LINK membership. These sub groups and task groups will decide how to take the particular issues forward, who else should be involved and how to engage with the wider LINK for their feedback.

The current core group consists of representatives from a diverse wide variety of voluntary and community groups and also individual health champions. The membership will be continually reviewed and will evolve over time. The LINK host support team asked a range of organisations to nominate a suitable individual who had an interest in Health & Social care to sit on the LINK Core Group. The individual health champions on the core group link to each trust and are recognised by the Trusts as health champions.

'Constituency'

Representation

Older People

Eileen Fitzgerald - Older People's Engagement Group (OPEG)

Eileen chairs OPEG; the group brings together older people from across the town to ensure that their voices are heard by those who make decisions affecting the lives of older people in Warrington. OPEG engages with local people, groups and organisations as well as the Older People's Partnership Board to ensure that local services address the real needs and wishes of older people. Eileen Co-Chairs the Older People's Partnership Board and also represents the Healthier Communities and Older People's thematic group on the Warrington Partnership Board. Eileen attends the Dementia Steering Group and the Stroke Committee representing the LINK.

Children and Young People

Sue Blyth - Youth Matter! and YMCA

Youth Matter! is an independent organisation which provides support, information and advice to organisations working with young people within Warrington. The aim of Youth Matter! is to bring together voluntary youth groups and organisations, provide information and support and to represent the interests of young people within the voluntary and statutory sector. Sue works with the YMCA with vulnerable young adults. Sue attends the Violent Patient Scheme on behalf of the LINK.

Carers

Roz Coleman - Carers Centre

Warrington Carers Centre provides information and support to carers and former carers. It offers social and training events, emergency card scheme, a quarterly newsletter and a counselling service. The Carers Centre also supports the Young and Caring Project (YAC). YAC is supporting young carers under the age of 19. It provides, 1-to-1 mentoring, counselling, activities/days out, information giving, family support through signposting and emotional support.

Roz also sits on many different groups and committees including the User and Carer Forum, the Carers Partnership Board and the Carers Partnership Board Communication and Information Thematic Group.

Disability

Warrington Disability Partnership (WDP)

WDP is an independent, user led Social Enterprise committed to valuing everyone's life skills, experience and individuality to enable positive change. WDP actively promotes independent living by providing information on peer counselling, housing, equipment, personal assistance, transport, access, employment, education, training and other services. WDP runs many different events and services, including Disability Awareness Day, Europe's biggest non for profit, voluntary led disability exhibition, an information point in Warrington Market and the Warrington Disability Forum, which provides a focus for consultation and information exchange. WDP attends the Learning Disabilities Forum at Warrington and Halton Hospitals representing the LINK.

Homelessness

Sue Blyth – YMCA

YMCA England supports and represents the work of 135 YMCAs providing professional and relevant services that make a difference to the lives of young people in over 250 communities.

The YMCA reaches out to over 1 million young people each year, working with them at every stage of their lives and offering support when and where they need it most.

The YMCA is the largest voluntary sector provider of safe, supported accommodation in England for single men and women between the ages of 16 and 35.

Drugs, substance misuse

Dida Goode – Carers and Service Users Group Coordinator Dida works for Warrington Council for Voluntary Service (CVS) as the Carers and Service Users Group Coordinator working with substance misuse service users and carers. The aim of the post is to coordinate, develop and support substance misuse service users and carer's involvement in Warrington. This entails supporting groups already in existence, developing a forum for service users and carers and providing a link between those groups and statutory providers within Warrington, ensuring that services are delivered according to the identified needs of service users and carers.

Locality**Neil Roberts - Stronger Together**

Stronger Together's aim is to improve the quality of life for people in five neighborhoods of the town. These are, Bewsey Dallam, Greater Blackbrook, Longford, Grasmere and Greenwood. Stronger Together liaise between partners, communities and individuals, helping to get every voice heard, support community activity and help groups to network with other groups working for the benefit of the area, help to find solutions to any problems residents may have, help groups access funding and training, work with the community helping to improve the area, act as facilitators/ mediators helping communities to identify needs, priorities and aspirations and work with partners to re-shape service delivery where possible to better meet community priorities.

Mental Health**Val Brown – Warrington Mental Health Forum**

The Forum brings together people who are affected by mental distress. The Forum is an open, welcoming place for people from all backgrounds and communities and is for anyone affected by any kind of mental health condition. The Forum provides opportunities to, meet new people, chat and share experiences, hear from invited speakers about subjects that Forum members are interested in, gaining new skills - the Forum can help people access training, have a say about services - what's good, what's bad, what could be improved, help improve services and have some time to relax. The Forum is also involved in organising a range of events to raise awareness of mental health issues, help people look after their mental health and challenge the stigma surrounding mental illness. Val attends the Transforming Adult Social Care Services Service User and Carer Group representing the LINK.

Vulnerable Adults**Elaine Morgan – Vulnerable Tenants Support Scheme (VTSS)**

VTSS provides support to vulnerable people within the borough of Warrington, who are either in their own home or are moving into a new home. Our service operates under 4 contracts, Complex Needs, which covers substance misuse, mental health, physical & sensory disabilities or multiple issues. Resettlement, which covers resettlement from supported accommodation into independent accommodation. Domestic Violence and Young People at Risk covering 16 – 24 year olds. The aim of the VTSS is to ensure they receive the tailored support they need, to ensure they can successfully continue living independently

Long Term Conditions**Eileen McDonald – Expert Patient Programme Tutor**

Eileen is an ex PPI Forum member for Warrington PCT.

Having lived with a long term mental and physical condition for over twenty years she is an active member of Arthritis Care, Moderator for A.C.'s online support forums, the National Rheumatoid Arthritis Society, National Osteoporosis Society and a member of the Arthritis and Musculoskeletal Alliance which is the overarching campaigning arm for all musculoskeletal conditions.

With Arthritis Care Eileen became involved in facilitating lay-led disease specific and generic self management programmes for chronic long term conditions, the aim of the programmes is to enable people

cope better with long term health problems by confidence building and improving and maintaining a better quality of life, Eileen is also a tutor for the Expert Patient Programme in Warrington and for Halton and St. Helens PCT.

Eileen is involved with many different groups regarding Mental and Physical long term conditions, which includes attending the NCHT Patient Advisory Group, Critical Care Delivery Group, Vulnerable Adults Group, Warrington Orthopaedic Pathways Group, PCT Long Term Conditions Group, User and Carer Forum, Warrington Dental Commissioning Group, Mental Health Wellbeing Preventions and Planning Group, Mental Health Forum and 5Boroughs Mental Health User and Carers Group. Eileen is also a trustee of Warrington Carers Centre, and sits on the Carers Partnership Board and Young Carers Strategic Project Board. She also sits on the WBC / NHS Warrington Integrated Care Board.

Mental Health

Sarah Brittlebank – Mental Health Service User Development Worker.

Sarah is a Mental Health Service User Development Worker. Sarah facilitates the Warrington Mental Health Forum, which brings together people who have been affected by mental distress and also works with the Moodswings group, which is a self help for people with experience of mental distress, including relatives and carers. Sarah also supports people with mental health problems to gain further support into services. Sarah is involved in supporting mental health service users and carers to evaluate mental health services in Warrington. Sarah sits on many committees including the Mental Health Partnership Board, Clinical Issues Sub Group and the Promotion and Prevention Sub Group.

Black, Minority Ethnic Groups

Hasan Kazi – Warrington Ethnic Communities Association (WECA)

Hasan is a member of WECA, which was established in 2004 to undertake the following functions:

- Champion the need for better service provision for the BME Communities
- Identify priority need for BME communities in Warrington
- Champion the need for community development support for BME communities

WECA can support these needs through liaison with service providers.

Hasan was involved in Stage 1 of the Intermediate Care work at NHS Warrington and is now involved in Stage 2.

Health Champion – Acute Care

Anne Turner

Anne is an ex PPI Forum member for Warrington and Halton NHS Foundation Trust. Anne is involved in many groups within the hospital including, the Blood Transfusion Group and the Patient Experience Group. Anne's main interests are in monitoring standards of patient care and the hospital environment. Before retirement Anne worked as a Modern Matron on an Orthopaedic and Trauma Unit. Anne is also the Treasurer of Lymm Jubilee WI. Anne was also a Governor for the LINK for Warrington and Halton NHS Foundation Trust. Anne is one of the visiting team members for the LINK, and attends the Transforming Adult Social Care Services Service User and Carer Group.

**Health Champion
– NHS
Warrington**

Pat Taylor
Pat is also an ex PPI Forum member, chairing the Warrington PCT Forum. Pat attends the PCT board meetings on a monthly basis, as well as the Finance and Commissioning Board and the Equitable Access Board. Pat has contacts with many PCT staff, including commissioners as well as with the GP Commissioning Consortium and the Audit Commission. Pat also attends the NCHT Patient Advisory Group. Pat has been co-opted onto the WBC Health & Social Care Board. She is one of the visiting team members for the LINK.

**Health Champion
– 5 Boroughs
Partnership Trust**

Phil Yarwood
Phil is an ex PPI Forum member for 5BPS and a service user. Phil is heavily involved with the work of the 5BPS, sitting on many different groups and committees and has contacts with many service users. Phil regularly attends the PCT and 5BPS monthly board meetings, the Mental Health Partnership Board (LIT) and the Local Strategic Partnership sub group Healthier Communities and Older People. Phil is also a member of the Warrington Mental Health Forum.

**Health Champion
– Social Care**

Alf Clemo
As a lay person, Alf is involved in monitoring and visiting nursing homes and residential homes for the Commission for Social Care Inspection. Alf is also heavily involved in the Older People's Forum as well as many other groups relating to health and social care. Alf sits on the Electronic Prescriptions Committee representing the LINK.

**Older People's
Forum**

Bruce Read
Bruce represents the Older People's Forum. He is a retired Doctor. Bruce has attended Transforming Community Services Focus Groups representing the LINK and sits on the Disinvestment panel.

Organisations in the GATEWAY

Care & Repair – provide a service for older, disabled or vulnerable people and families on low income who own their own property or live in private rented accommodation and wish to repair, improve or adapt their homes.

Tel: **01925 414916**

Citizens Advice Bureau – provide an impartial, confidential and free service to people needing advice on a wide range of subjects; from employment advice, debt management to immigration issues. A drop in service is provided Mon to Fri, 9.30am – 12.30pm, or by appointment in the afternoon.

Tel: **01925 246994**

Connexions and Youth Advisory Services – provide advice and information for young people; the wide range of services includes information on careers, sexual health, relationships, substance abuse and support for young gay and lesbians.

Tel: **01925 424900**

Crossroads – provide fully trained, paid staff to take over the caring duties of individuals looking after sick, disabled or elderly family and friends.

Tel: **01925 655159**

Warrington LINK – Local Involvement Networks - supported by Black Health Agency. LINKs are made up of volunteers from the local community whose aim is to monitor and review the services of the local health Trusts. The members have the right to enter and inspect NHS premises and make reports and recommendations to the Trusts.

Tel: **01925 246892/3/4.**

Speak Up Group – a self advocacy group for adults with a learning difficulty. The group meet weekly to practice speaking about their lives. The Speak Up group believe that we are all different but we all have the same rights.

Tel: **01925 246888**

Talk...Don't walk – provide information and advice for children, young people, parents and professionals concerned about the issue of running away from home. The organisation offers a helpline and confidential support and advice via the telephone, web-chat or email. The service is available weekdays 8.30am to 4.30pm and weekends 10am to 4pm.

Tel: **01925 246800**

The Relationships Centre – provide advice, information and support to those individuals and families experiencing unhealthy or abusive relationships. The centre will provide support and training to help people feel better about themselves, more independent and move on to a brighter future.

Tel: **0800 7839636**

Families Together – is a free service for parents who are or have been affected by unhealthy relationships and have little or no contact with their children.

Tel: **01925 246922**

Vulnerable Tenant Support Scheme – provides a wide range of support to vulnerable non Arena residents to help them towards sustainable tenancies and enable them to continue living independently. Clients can be vulnerable owing to age, illness or disability.

Tel: **01744 670265**

Warrington Advocacy – a project managed by COUNCIL FOR VOLUNTARY SERVICE who support local people to speak up, put their point of view across and get their voice heard. The service is independent, free and confidential.

Tel: **01925 246890**

Warrington Borough Ministry – is a reference point for faith enquiries amongst the institutions and community sectors throughout Warrington; work is undertaken by Rev Stephen Kingsnorth. He is also a representative for the faith communities on various local committees.

Tel: Rev Stephen Kingsnorth **01925 246900**

Warrington Community Living – provide supported living care and accommodation for elderly and disabled people unable to live an independent life.

Tel: **01925 246870**

Warrington Council for Voluntary Service – supports the development of the voluntary sector within Warrington by providing a printing service, newsletters, information and advice about getting funding, developing new ventures and ideas and providing training.

Tel: **01925 246880**

Youth Matter – Warrington Council for Voluntary Service is a proactive organisation, which to meet the needs and aspirations of young people by strengthening and supporting the work of its members.

Tel: **01925 246880**

Warrington Housing Association – provide affordable high quality housing for families and single people along with sheltered housing for the elderly. In addition to this WHA provide accommodation specially designed and managed for people with particular

care and support needs.

Tel: **01925 246810**

Warrington Multi-Cultural Forum – promote a greater awareness and understanding of different people living Warrington. They also offer support information and informal meetings where people of all cultures can meet in a friendly welcoming atmosphere.

Tel: **01925 246907**

Warrington Womens Aid - (WWA) Refuge is a charitable organisation that provides a vital service to women and their children who experience physical, sexual and emotional abuse in the home.

Tel: **01925 417138**

Warrington and Halton Eating Disorder Service - Part of Cheshire and Wirral Partnership NHS trust, and providing community treatment for clients (ages 16-65) with moderate to severe eating disorders.

Tel: **01925 248475**

Footsteps - Provide listening, information and support services for parents and families of drug and alcohol users.

Tel: **01925 244524**

Mobile: **07834 476759**

National Helpline: **08457 023867**

OPEG (Older People's Engagement Group) - Gives older people in Warrington a chance to voice their opinions on important issues. It is made up of representatives from various groups across the town who try to improve the quality of life of older people.

Tel: **01925 246966**

Stepping Stone Project - Provide help and advice for people who are homeless and/or vulnerable and in need of support regarding homelessness and tenancy support. In addition to advice, they operate accommodation and support services for people age 16+ in the Warrington area.

Tel: **01925 246936**